

4.12.5.1 INTRODUCTION

This section analyzes the impacts of the Westside Community Planning Project on library services in the City of Ventura. Information provided by the Ventura County Library System was used to prepare the following analysis.

4.12.5.2 ENVIRONMENTAL SETTING

a Ventura County Library System

The Ventura County Library System (VCLS) is currently organized as a special district county library. Property tax revenue supplies the majority of the income for the VCLS. In addition, a portion of the City’s general fund is contributed to the County Library Services Agency and is used to finance improvements to library facilities and services.

Two public libraries are located in Ventura and are a part of the VCLS: EP Foster Library, which is located in the downtown area, and Avenue Library, which is located within the planning area. The HP Wright Library, which is located in the City, was closed in November 2009 due to budgetary constraints. A noncirculating research library collection of historical documents and related materials is housed at the Museum of Ventura County. The locations of libraries serving the project site are shown in **Figure 4.12.5-1, Locations of Libraries in Ventura.**

The current holdings of the two circulating libraries that serve the City, including books, periodicals, and audio and video recordings, are summarized in **Table 4.12.5-1, Existing Ventura County Library System Resources.**

**Table 4.12.5-1
Existing Ventura County Library System Resources**

Library	Volumes	Facility Size (square feet)
EP Foster	182,017	33,000
Avenue	20,492	3,000
Total	202,509	36,000

There are no currently adopted City or VCLS standards for library services. In lieu of an adopted standard, the City of Ventura's 2005 *General Plan EIR* used a standard of 2 volumes and 1 square foot of library space per capita as a basis of analysis.¹ Based on the City's estimated 2011 population of 107,124 residents, libraries within the City currently provide approximately 1.9 volumes and 0.34 square foot of library space per capita.

b. Regulatory Framework

General Plan

The *Our Educated Community* chapter is one of 10 chapters of the City's 2005 General Plan. This chapter sets forth the City's goals and policies with respect to education, including library service. The following policy and actions from the General Plan would apply to the proposed project:

Policy 8C	Reshape public libraries as 21 st Century learning centers.
Action 8.9	Complete a new analysis of community needs, rethinking the role of public libraries in light of the ongoing advances in information technology and the changing ways that individuals and families seek out information and life-long learning opportunities.
Action 8.10	Reassess the formal and informal relationships between our current three branch public libraries and school libraries – including the new Ventura College Learning Resource Center – as well as joint use of facilities for a broader range of compatible public, cultural, and educational uses.
Action 8.11	Develop a Master Plan for facilities, programs, and partnerships to create an accessible, robust, and vibrant library for the 21 st Century system, taking into consideration that circulation of books is no longer the dominant function but will continue to be an important part of a linked network of learning centers.

¹ City of Ventura, *2005 General Plan Final Environmental Impact Report*, (2005) 4.11-41.

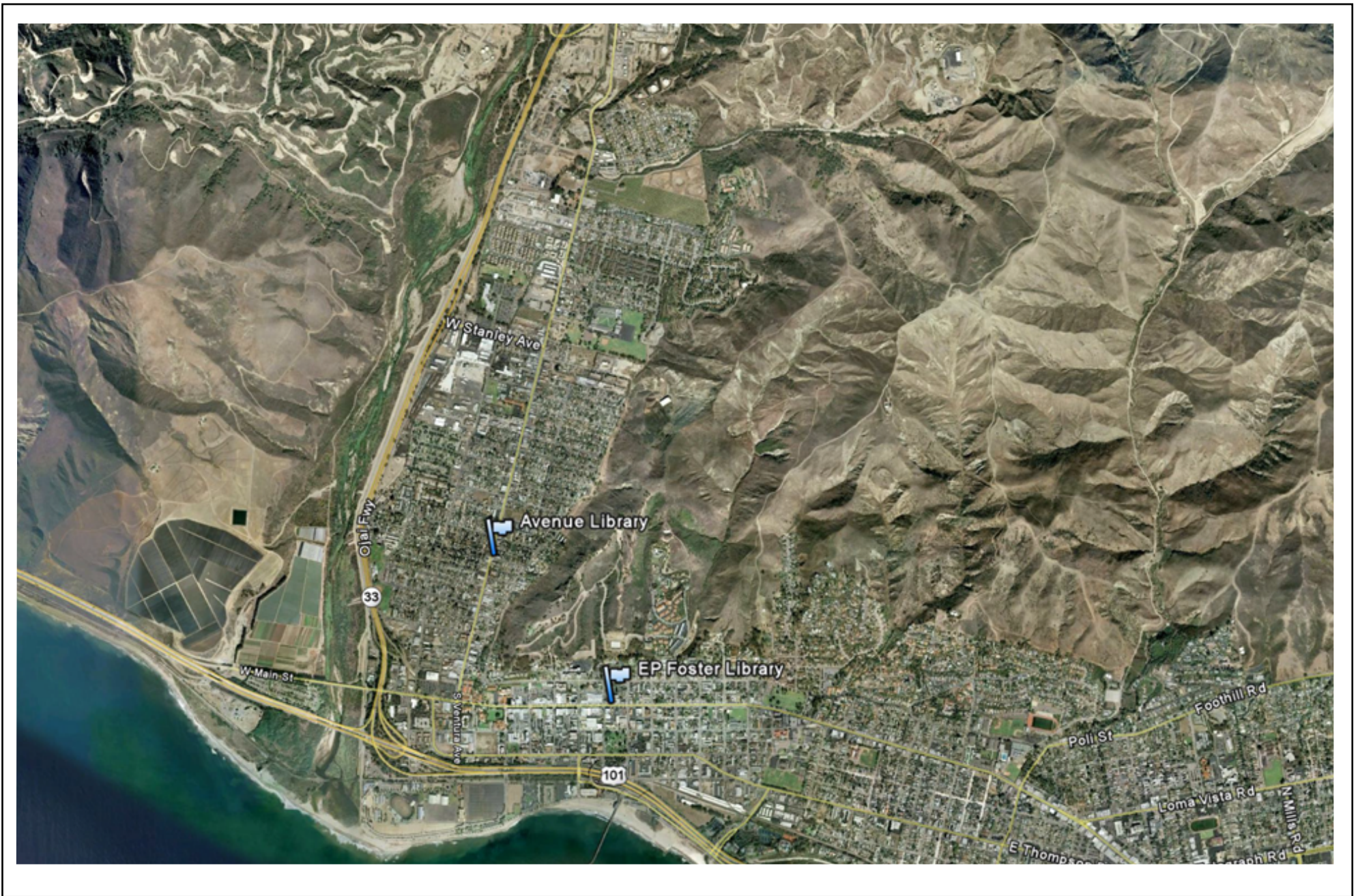


FIGURE 4.12.5-1

Locations of Libraries in Ventura

Action 8.12 Develop formal partnerships, funding, capital strategies, and joint use agreements to implement the new libraries Master Plan.

4.12.5.3 IMPACT ANALYSIS

a. Threshold of Significance

Based upon Appendix G of the *State CEQA Guidelines* under Section XIV, Public Services, the following significance threshold is used to evaluate project impacts related to libraries.

LIB-1 Would the project result in substantial adverse physical impacts associated with the provision of new or physically altered governmental facilities, need for new or physically altered governmental facilities, the construction of which could cause significant environmental impacts, in order to maintain acceptable service ratios, response times or other performance objectives for libraries?

b. Methodology

While there are no adopted standards for library service, for the purposes of analysis uses the standard provided in the *2005 General Plan EIR* of 2 volumes and 1 square foot of library space per capita is used.

c. Analysis, Mitigation Measures, and Residual Impacts

The Westside Community Plan provides the following policy and action intended to address library services in Chapter 12.8, *Our Educated Community*:

Policy 12 CC Partner with the Ventura Unified School District, Ventura Community College, Ventura County Library, and other education organizations to provide an adult education and training program in the Westside Community.

Action 12.8.4 Explore relocation and expansion of the neighborhood library facility from the current location at 606 North Ventura Avenue, near higher density neighborhood development, school, or park.

LIB-1 Would the project result in substantial adverse physical impacts associated with the provision of new or physically altered governmental facilities, need for new or physically altered governmental facilities, the construction of which could cause significant environmental impacts, in order to maintain acceptable service ratios, response times or other performance objectives for libraries? (Class III, Not Significant)

Analysis

There are no adopted standards for library service in the City of Ventura or VCLS. For purposes of analysis, the standard provided in the 2005 General Plan EIR of 2 volumes and 1 square foot of library space per capita is used.

As discussed in **Section 4.11, Population, Housing, and Employment**, development forecast to occur within in the Westside Community Planning Project area would add approximately 3,750 residents to the City's population. Based on the standard of 2 volumes and 1 square foot of library space per capita, this would create the need for an additional 7,500 volumes and 3,750 square feet of library space in order to serve residents in the planning area. Current resources in the City fall short of this standard, providing approximately 1.9 volumes and 0.34 square foot of library space per capita.

Library services are funded primarily by property tax increments collected by the state, supplemented by City general fund revenues. No specific development projects are proposed or analyzed at the project level in this program EIR at this time. Project-level review will be required for individual projects proposed within the Westside Community Plan area. New development under the Westside Community Plan would generally have higher assessed property values than existing development, which would result in an increase in property tax revenues as the Westside Community Plan area builds out. The portion of the Westside Redevelopment Project area located outside the Westside Community Plan area is located within the City's adopted Downtown Specific Plan area. The Downtown Specific Plan also contains an action to address library service at the EP Foster Library. Implementation of the Westside Community Plan, Downtown Specific Plan, and General Plan policies and actions referenced above would support the future development of new library facilities within the planning area, and impacts would be less than significant. Impacts would therefore be Class III, Not Significant.

Mitigation Measures

No mitigation measures are required.

Residual Impacts

Impacts would be Class III, Not Significant.

d. Cumulative Impacts

The City's 2005 *General Plan EIR* identified the need for new library resources and facilities to serve the City at General Plan buildout. Based on growth forecast for General Plan horizon year, an additional 24,741 volumes and 78,153 square feet of library space would be needed. Furthermore, since the publication of the 2005 *General Plan EIR*, the HP Wright Library was closed, reducing the resources and facilities available. However, the General Plan and specific plans within the City all contain policies and actions to provide adequate library services as the City builds out.

No specific development projects are proposed or analyzed at the project level in this program EIR at this time. Project-level review will be required for individual projects proposed within the Westside Community Plan area and within other areas of the City. Buildout of the Westside Community Plan would permit the construction of an estimated 150 residential units more than are projected to occur by 2025 under existing land use designations. The additional population of 398 residents would require an incremental increase in the amount of library resources and space to meet the standard of 2 volumes and 1 square foot per capita. This amount is not substantial, the cumulative impact would be less than significant, and the project's contribution to cumulative impacts would not be cumulatively considerable. Therefore, cumulative impacts would be Class III, Not Significant.